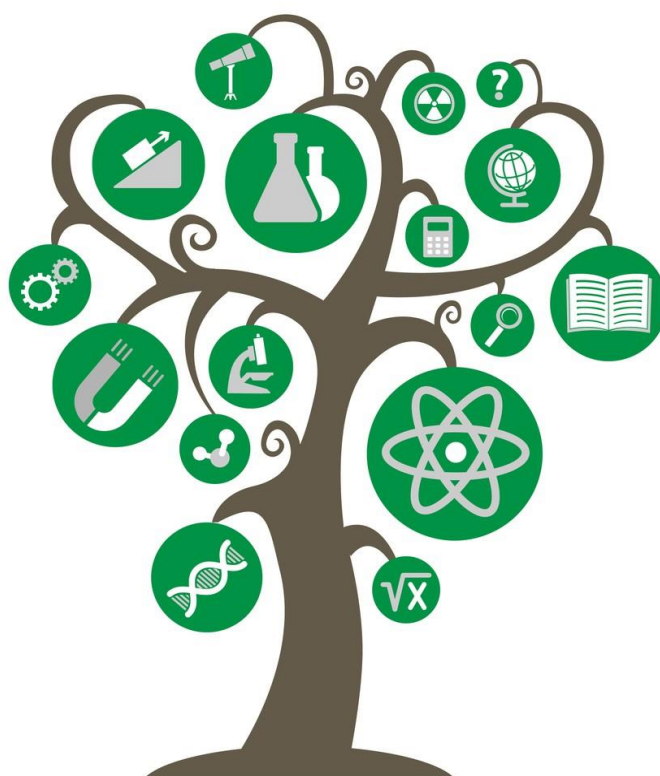


**IRKUTSK SCIENTIFIC CENTER
SIBERIAN BRANCH OF
THE RUSSIAN ACADEMY OF SCIENCES
DEPARTMENT OF SCIENTIFIC AND EDUCATIONAL ACTIVITIES
AND EXPERT ASSESSMENT**



**MULTIDISCIPLINARY ACADEMIC RESEARCH CONFERENCE
«Science Present and Future: Research Landscape in the 21st century»**

Programme

May 19, 2022

Opening of the Conference - 10.00

Welcome speech

Konstantin A. Apartsin, Director of ISC SB RAS, D.Sc. (Medicine)



Session 1. Geosciences, Solar Sciences and Hydrosociences: New Frontiers

Thursday, 19 May 2022

Venue: Room 224 (personal attendance)

OR <https://us02web.zoom.us/j/86591808211?pwd=TTNrdUdzdUIIK3BnMUEyT0Q5cS95dz09>

ID: 865 9180 8211

Password: 000435

Time: 10.00 – 12.00

Moderator:

Nadezhda N. Efimova, Ph.D. (Philology), Associate Professor ISC SB RAS

1	Vyatkin A.N. ISTP SB RAS, Irkutsk	Study of the effects of large-scale tropospheric processes in the upper atmosphere
2	Vlasov A. A. ISTP SB RAS, Irkutsk	Waves in the magnetosphere and their interaction with the plasma
3	Ermakov V. Yu. ISTP SB RAS, Irkutsk	Antenna Pattern Calibration using an UAV-based device
4	Zhilicheva A. N. IEC SB RAS, Irkutsk	Ambiguity in the interpretation of baddeleite discordant values
5	Marchuk R. A. ISTP SB RAS, Irkutsk	Ultra-short-period geomagnetic field pulses
6	Obytotsky G.V. ISTP SB RAS, Irkutsk	Investigation of variations in the aerosol optical depth based on satellite measurement data
7	Rubtsov A. V. ISTP SB RAS, Irkutsk	Ultralow frequency waves research from case study to statistical analysis of spacecraft data
8	Trofimov E. A. ISTP SB RAS, Irkutsk	Experimental study of internal gravity waves
9	Fedorov M. E. ISTP SB RAS, Irkutsk	Operation of the navigation receiver under the influence of interference
10	Fomin V. A. IEC SB RAS, Irkutsk	Features of the geological structure of Precambrian sedimentary formation of the baykit anticline
11	Shamsutdinova Iu. N. ISTP SB RAS, Irkutsk	Studying of the relationship between microwave- and meter-wavelength emission from flare on June 3, 2021



Session 2. Linguistics and Educational Sciences

Thursday, 19 May 2022

Venue: Room 115 (personal attendance)

OR <https://us02web.zoom.us/j/86591808211?pwd=TTNrdUdzdUIIK3BnMUEyT0Q5cS95dz09>

ID: 865 9180 8211

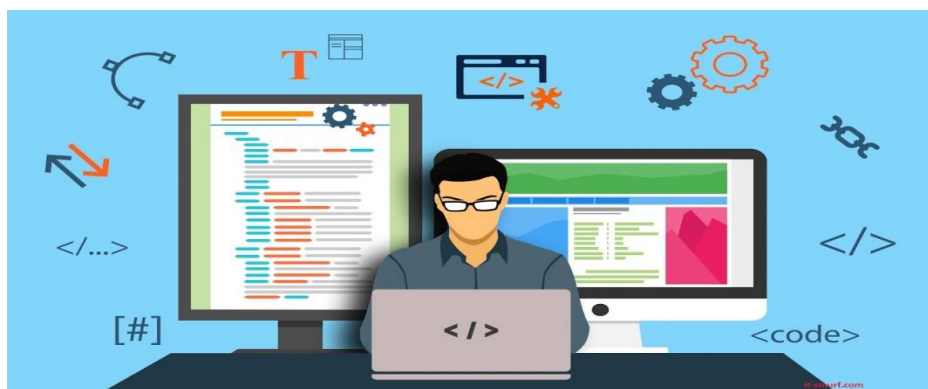
Password: 000435

Time: 10.00 – 12.00

Moderator:

Elena P. Mariasova, senior lecturer, research assistant, ISC SB RAS

1	Markova D. A. ISC SB RAS, Irkutsk	Emotionally colored statements in argumentation
2	Mil`gunov D. S. ISC SB RAS, Irkutsk	Linguocognitive features of the use of metonymy in the Internet discourse.
3	Zolotareva I. I. ISTU, Irkutsk	Using online educational resources in forming auditive competence
4	Denisov E. A. ISC SB RAS, Irkutsk	Formation of intercultural competence of foreign students: statement of the problem
5	Istomin V.S. ISC SB RAS, Irkutsk	Formation of compensatory competence in teaching foreign students to speak Russian: towards a problem statement
6	Jorge Ríos Utrera ISU, Irkutsk	Individual-psychological characteristics and cognitive styles of activity of students in learning a foreign language



Session 3. IT, Engineering, Digital Science

Thursday, 19 May 2022

Venue: Room 224 (personal attendance)

OR <https://us02web.zoom.us/j/86591808211?pwd=TTNrdUdzdUIIK3BnMUEyT0Q5cS95dz09>

ID: 865 9180 8211

Password: 000435

Time: 13.00 – 15.00

Moderator:

Elena P. Mariasova, senior lecturer, research assistant, ISC SB RAS

INTRODUCTION by Galina V. Tretyakova, Cand. Sc. (Pedagogy), associate professor of the Department of foreign languages and intercultural communication, Financial University under the Government of the Russian Federation.

1	Astapov V. Iu. ISEM SB RAS, Irkutsk	Analysis of ways to increase the flexibility of the energy system with a high share of wind power plant energy during transient processes
2	Amosova D.V. ISEM SB RAS, Irkutsk	Basic information about active energy complexes
3	Bukhanova T. V., Zelensky V.N., Lazareva A.S. FU, Moscow	The place and role of alternative energy in the energy balance of the world
4	Mamedov T. G. ISEM SB RAS, Irkutsk	Application of cognitive modeling in predictive studies of the fuel and energy complex on the example software package "INTEC-A"
5	Nazarov S. D. FU, Moscow	Economic aspects of protectionism policy in world trade
6	Novikova P. A., Efimov I. D. FU, Moscow	Central Bank Digital Currencies: challenges and outcomes
7	Pogosyan I.A. FU, Moscow	The impact of the Fourth Industrial Revolution on the world market of goods and services
8	Khlopova D. E. FU, Moscow	Analysis of the state and dynamics of the global SVoD-platforms market
9	Charnetskaya V.A. FU, Moscow	Modern international business strategies

10	Navodchenko E. U. FU, Moscow	Social differentiation, opportunities for increasing the income of the population
11	Kornilov D. A. ISEM SB RAS, Irkutsk	Investigation of criteria for assessing reliability of energy system accumulation



Session 4. Life-sciences on the Cutting Edge of Science

Thursday, 19 May 2022

Venue: Room 115 (personal attendance)

OR <https://us02web.zoom.us/j/86591808211?pwd=TTNrdUdzdUlIK3BnMUEyT0Q5cS95dz09>

ID: 865 9180 8211

Password: 000435

Time: 13.00 – 15.00

Moderator:

Nadezhda N. Efimova, Ph.D. (Philology), Associate Professor ISC SB RAS

1	Tarkhova V. V. LIN SB RAS, Irkutsk	The role of microorganisms in methane oxidation
2	Globenko N.E. ESIMER (VSIMEI), Angarsk	Physical Development Assessment for Children in Correctional Schools
3	Donina K.Iu. BM SB RAS, Irkutsk	Effects sodium dodecyl sulfate on beet root cells
4	Zavgorodnyaya O. Yu. SIPPB SB RAS (SIFIBR), Irkutsk	History of botanical research of the southwestern coast of lake Baikal
5	Kovalenko S.A. BM SB RAS, Irkutsk	Topicality of research in the field of plant-microbial fuel cell technology
6	Obukhova A. Yu. SIPPB SB RAS (SIFIBR), Irkutsk	History of studying the bryophlora of the Angara-Sayan floristic region
7	Polyakova E.A. SIPPB SB RAS (SIFIBR), Irkutsk	Some physiological and biochemical mechanisms of adaptation of spring wheat seedlings at different stages of ontogenesis to high temperature
8	Cherezova V. M. LIN SB RAS, Irkutsk	Mobile genetic elements in transcriptomes of Lake Baikal coregonid fishes

15.00 - Closing of the Conference

Nataliya A. Sverdlova, Head of the Division of Science, Education and Expert Assessment, Ph.D. (Philology), Associate Professor ISC SB RAS

